



Easterly Industrial Park is 320 acres located in Garfield County, Oklahoma, approximately 3 miles east of the City of Enid. The industrial park has access to BNSF Railway and has received certification as part of BNSF Railway's Site Certification program. BNSF certification ensures a site is ready for rapid acquisition and development through a comprehensive evaluation of existing and projected infrastructure, environmental and geotechnical standards, utility evaluation and site availability.

**SELECTING A CERTIFIED SITE CAN:**

- Reduce development time
- Increase speed to market
- Reduce upfront development risk of rail-served industrial sites

**PROPERTY DETAILS**

Easterly Industrial Park consists of 320 acres, of which 90% of the site is considered developable. The site is zoned Heavy Industrial and is bordered to the south by BNSF Railway. North of US Highway 412, Easterly Industrial Park is conveniently located 26 miles from I-35 and is served by 66th Street, a new industrial grade road.



**Site Details:**

- 320 acres available for development
- Direct access to BNSF Railway
- Industrial zoning

**CONTACT INFORMATION**

BNSF Regional Manager

**Mallory Estes**

817.352.3341

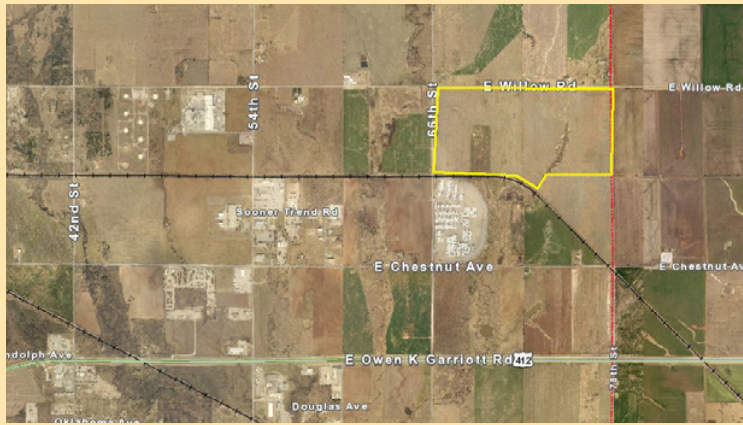
mallory.estes@bnsf.com

Enid Regional Development Alliance

**Charlene Flanery**

580.233.4232

Charlene@growenid.com



## SITE PROFILE

<b>Land Area</b>	320 acres
<b>Zoning</b>	Heavy Industrial
<b>Owner</b>	Bill Easterly
<b>Price</b>	\$8,000/acre

## UTILITIES

<b>Electric</b>	Oklahoma Gas & Electric
<b>Gas</b>	Oklahoma Natural Gas
<b>Water</b>	City of Enid
<b>Wastewater</b>	City of Enid
<b>Telecommunications</b>	Pioneer Telephone Cooperative and AT&T

## DEMOGRAPHICS

Enid is a community in Garfield County. As of the 2018 census estimate, the population was 51,116, making it one of four metropolitan areas in Oklahoma.

## POPULATION

<b>City of Enid</b>	51,116
<b>5 mile radius</b>	52,141
<b>10 mile radius</b>	56,882
<b>15 mile radius</b>	60,354
<b>20 mile radius</b>	65,192

## WORKFORCE

Enid MSA	
<b>Total Employment</b>	28,235
<b>Annual Avg. Wage</b>	\$45,428/year

## BNSF PREMIER PARKS, SITES AND TRANSLOAD PROGRAM

BNSF Certified Sites are a part of the Premier Parks, Sites and Transload program which is a strategic approach to addressing the increasing demand for customer site locations by developing various types of facilities across the BNSF network. BNSF Certified Sites have been reviewed by an industry expert in order to ensure accurate, reliable data. Our goal is to provide an inventory of rail-served sites that are available for immediate development.\*

\* In order to ensure a safe, efficient and economical switch operation, BNSF will want to review and approve the engineering plans to serve each tenant facility.